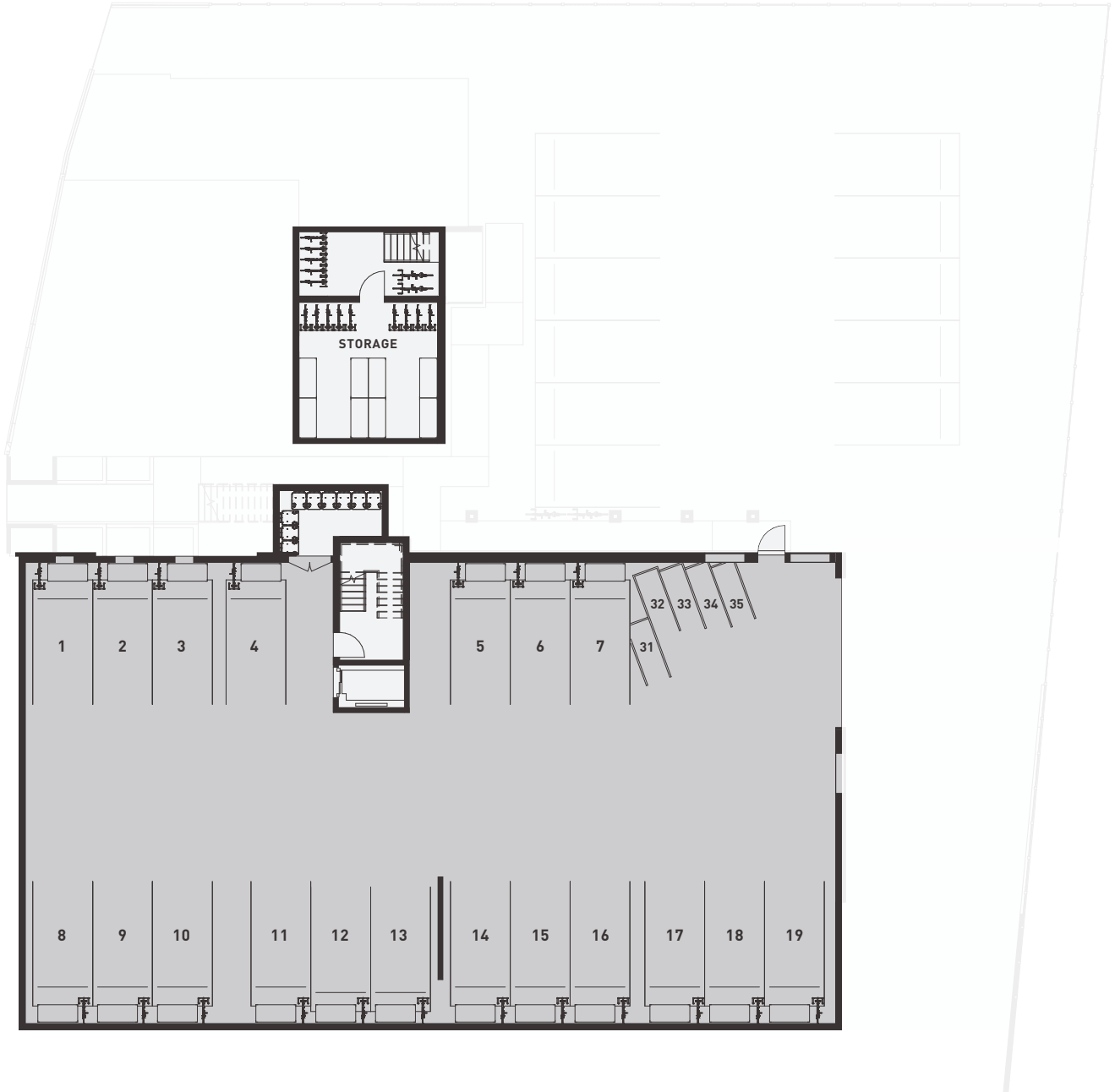




ELEMENT



● CAR PARK SPACES

● COMMON AREAS

Floorplans are indicative only and not drawn to scale. These materials were prepared prior to obtaining all necessary consents and the commencement of construction. Every precaution has been taken to establish the accuracy at the time of printing however no responsibility will be taken for any errors or omissions. All plans, images and artist impressions of exterior and interiors are intended as a guide only. The developer reserves the right to make changes to the development and the units (including the final fittings, finishes, dimensions and specifications of the development and the units) without notice. Furnishings and finishes are only included if and to the extent provided in the Agreement for Sale and Purchase. Interested parties are directed to rely on their own enquiries and the terms set out in the Agreement for Sale and Purchase.



ELEMENT



A K



B H I



C F G J L

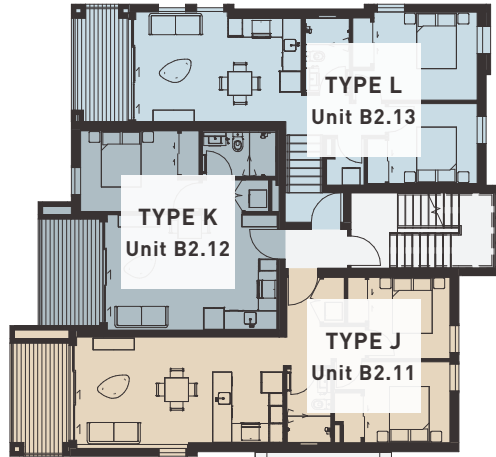


D E

Floorplans are indicative only and not drawn to scale. These materials were prepared prior to obtaining all necessary consents and the commencement of construction. Every precaution has been taken to establish the accuracy at the time of printing however no responsibility will be taken for any errors or omissions. All plans, images and artist impressions of exterior and interiors are intended as a guide only. The developer reserves the right to make changes to the development and the units (including the final fittings, finishes, dimensions and specifications of the development and the units) without notice. Furnishings and finishes are only included if and to the extent provided in the Agreement for Sale and Purchase. Interested parties are directed to rely on their own enquiries and the terms set out in the Agreement for Sale and Purchase.



ELEMENT



A K M



B H I



C F G J L





D E




Floorplans are indicative only and not drawn to scale. These materials were prepared prior to obtaining all necessary consents and the commencement of construction. Every precaution has been taken to establish the accuracy at the time of printing however no responsibility will be taken for any errors or omissions. All plans, images and artist impressions of exterior and interiors are intended as a guide only. The developer reserves the right to make changes to the development and the units (including the final fittings, finishes, dimensions and specifications of the development and the units) without notice. Furnishings and finishes are only included if and to the extent provided in the Agreement for Sale and Purchase. Interested parties are directed to rely on their own enquiries and the terms set out in the Agreement for Sale and Purchase.



ELEMENT



 1
  1
A
K
M

 1
  1
  1
B
H
I

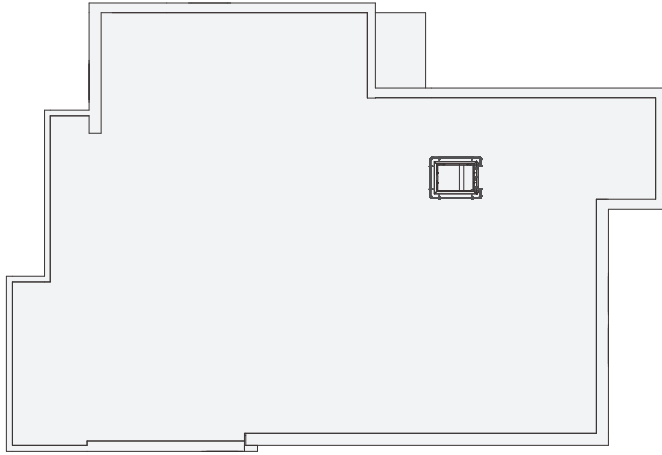
 2
  1
C
F
G
J
L

 2
  1
  1
D
E

Floorplans are indicative only and not drawn to scale. These materials were prepared prior to obtaining all necessary consents and the commencement of construction. Every precaution has been taken to establish the accuracy at the time of printing however no responsibility will be taken for any errors or omissions. All plans, images and artist impressions of exterior and interiors are intended as a guide only. The developer reserves the right to make changes to the development and the units (including the final fittings, finishes, dimensions and specifications of the development and the units) without notice. Furnishings and finishes are only included if and to the extent provided in the Agreement for Sale and Purchase. Interested parties are directed to rely on their own enquiries and the terms set out in the Agreement for Sale and Purchase.

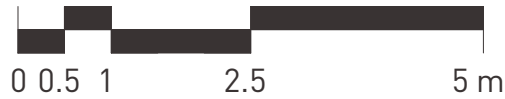


ELEMENT



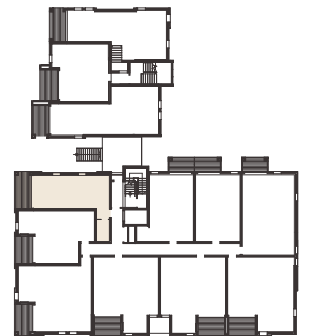


ELEMENT



UNIT(S) B1.01, B1.11 & B1.21 | GROUND LEVEL, LEVELS 1 & 2

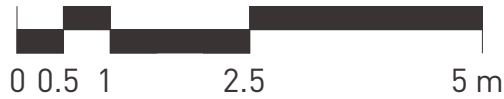
INTERIOR 48m² DECK 9m² GARDEN (GROUND LEVEL ONLY) 7m² TOTAL FLOOR AREA 57m²



Floorplans are indicative only and not drawn to scale. These materials were prepared prior to obtaining all necessary consents and the commencement of construction. Every precaution has been taken to establish the accuracy at the time of printing however no responsibility will be taken for any errors or omissions. All plans, images and artist impressions of exterior and interiors are intended as a guide only. The developer reserves the right to make changes to the development and the units (including the final fittings, finishes, dimensions and specifications of the development and the units) without notice. Furnishings and finishes are only included if and to the extent provided in the Agreement for Sale and Purchase. Interested parties are directed to rely on their own enquiries and the terms set out in the Agreement for Sale and Purchase.

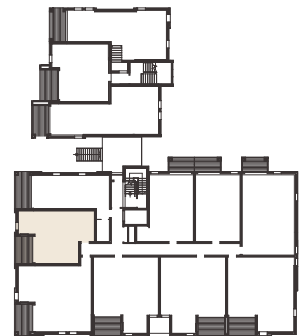


ELEMENT



UNIT(S) B1.02, B1.12 & B1.22 | GROUND LEVEL, LEVELS 1 & 2

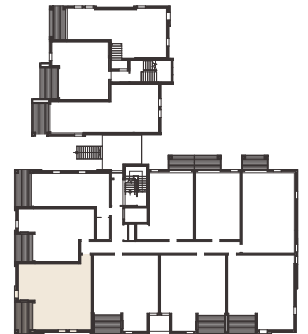
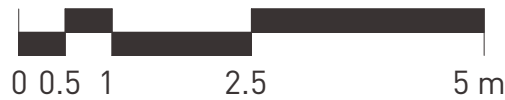
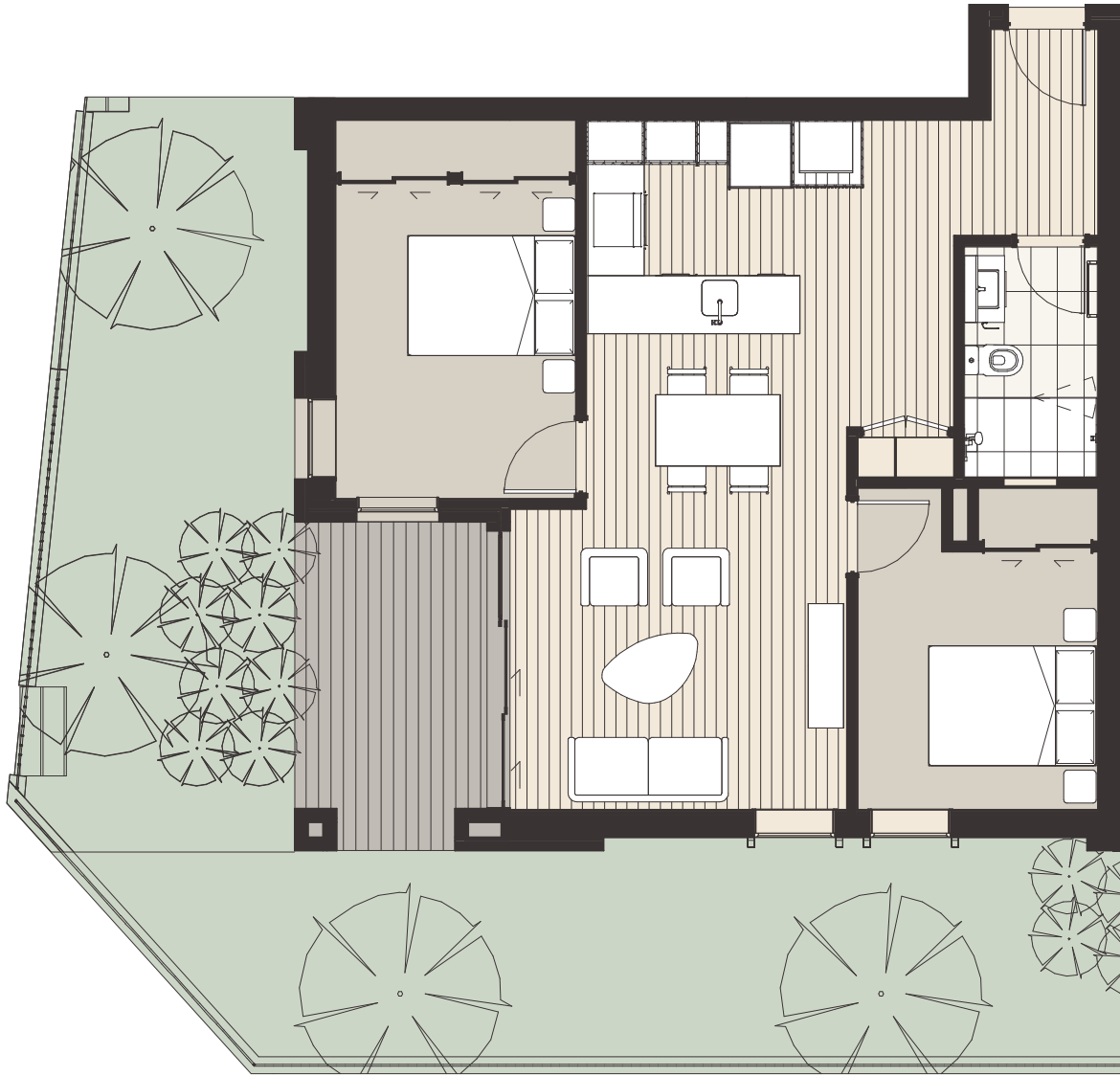
INTERIOR 49m² DECK 7m² GARDEN (GROUND LEVEL ONLY) 14m² TOTAL FLOOR AREA 57m²



Floorplans are indicative only and not drawn to scale. These materials were prepared prior to obtaining all necessary consents and the commencement of construction. Every precaution has been taken to establish the accuracy at the time of printing however no responsibility will be taken for any errors or omissions. All plans, images and artist impressions of exterior and interiors are intended as a guide only. The developer reserves the right to make changes to the development and the units (including the final fittings, finishes, dimensions and specifications of the development and the units) without notice. Furnishings and finishes are only included if and to the extent provided in the Agreement for Sale and Purchase. Interested parties are directed to rely on their own enquiries and the terms set out in the Agreement for Sale and Purchase.



ELEMENT



UNIT(S) B1.03, B1.13 & B1.23

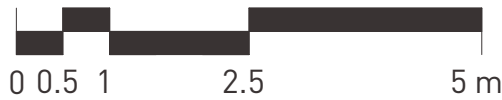
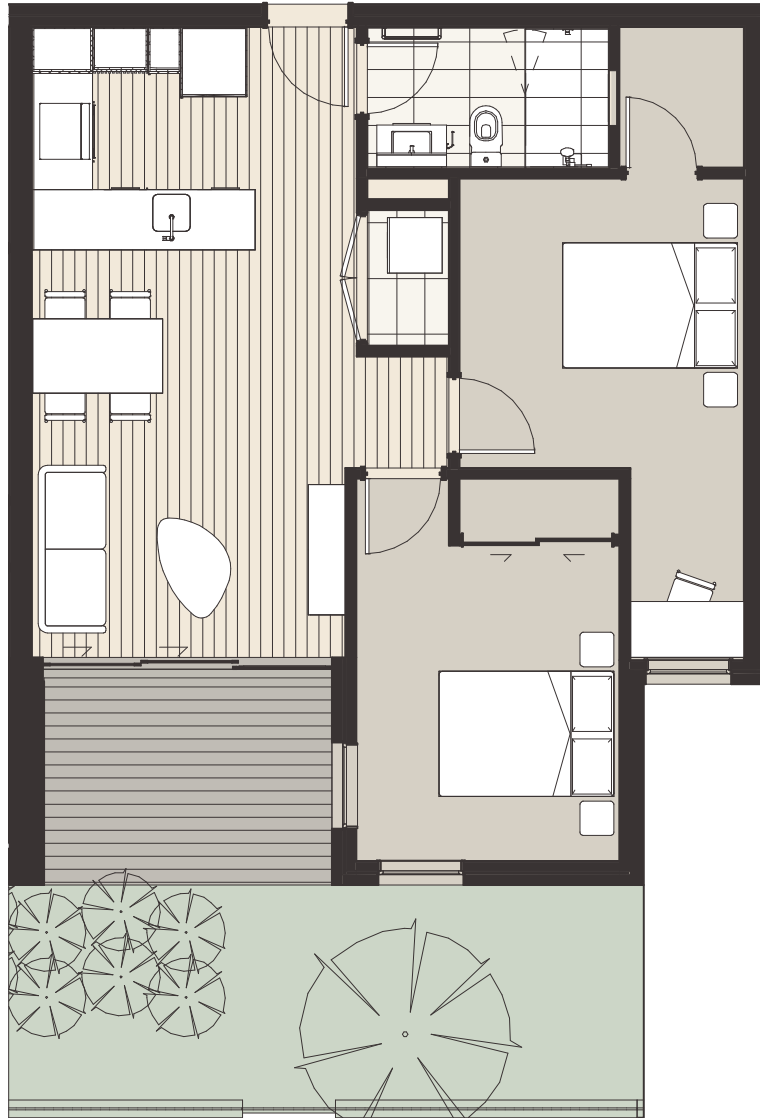
GROUND LEVEL, LEVELS 1 & 2

INTERIOR 69m² **DECK** 8m² **GARDEN (GROUND LEVEL ONLY)** 52m² **TOTAL FLOOR AREA** 77m²

Floorplans are indicative only and not drawn to scale. These materials were prepared prior to obtaining all necessary consents and the commencement of construction. Every precaution has been taken to establish the accuracy at the time of printing however no responsibility will be taken for any errors or omissions. All plans, images and artist impressions of exterior and interiors are intended as a guide only. The developer reserves the right to make changes to the development and the units (including the final fittings, finishes, dimensions and specifications of the development and the units) without notice. Furnishings and finishes are only included if and to the extent provided in the Agreement for Sale and Purchase. Interested parties are directed to rely on their own enquiries and the terms set out in the Agreement for Sale and Purchase.



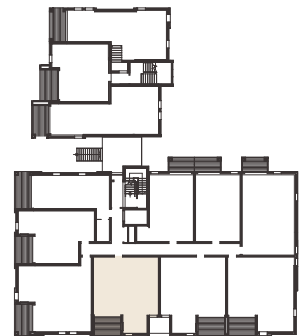
ELEMENT



UNIT(S) B1.04, B1.14 & B1.24

GROUND LEVEL, LEVELS 1 & 2

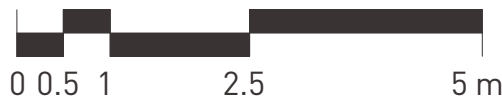
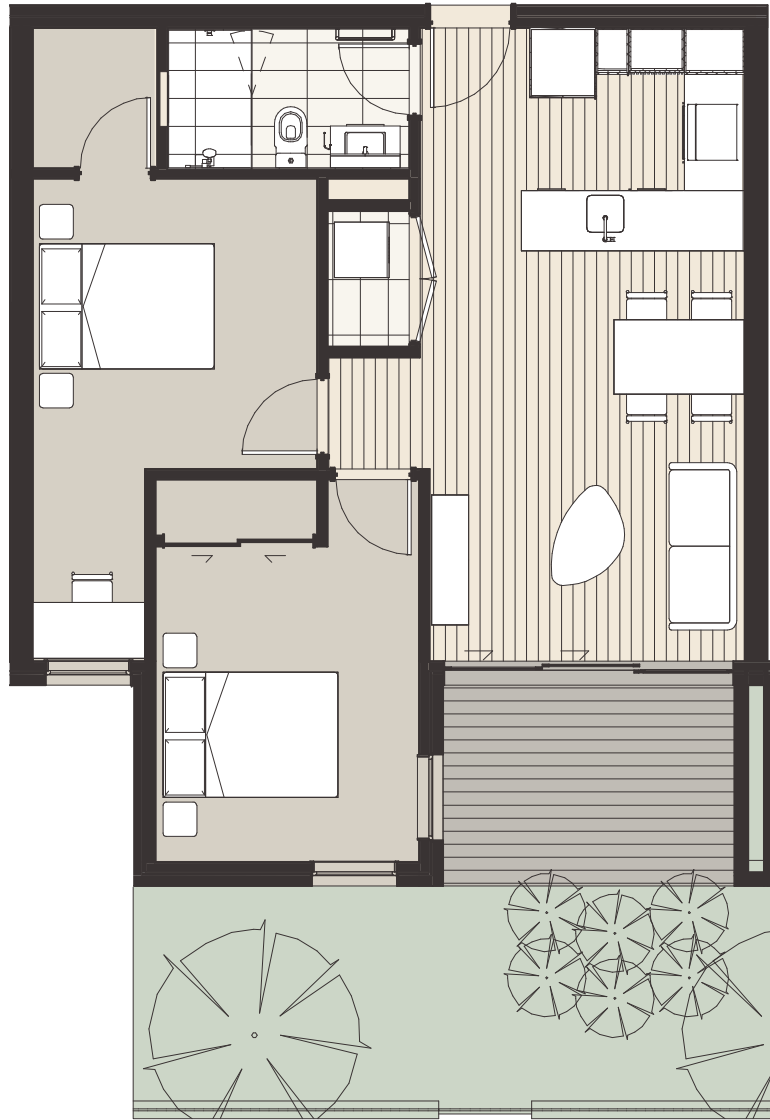
INTERIOR 64m² **DECK** 7m² **GARDEN (GROUND LEVEL ONLY)** 20m² **TOTAL FLOOR AREA** 71m²



Floorplans are indicative only and not drawn to scale. These materials were prepared prior to obtaining all necessary consents and the commencement of construction. Every precaution has been taken to establish the accuracy at the time of printing however no responsibility will be taken for any errors or omissions. All plans, images and artist impressions of exterior and interiors are intended as a guide only. The developer reserves the right to make changes to the development and the units (including the final fittings, finishes, dimensions and specifications of the development and the units) without notice. Furnishings and finishes are only included if and to the extent provided in the Agreement for Sale and Purchase. Interested parties are directed to rely on their own enquiries and the terms set out in the Agreement for Sale and Purchase.



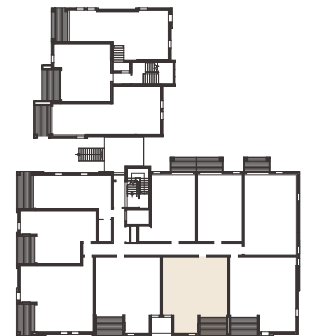
ELEMENT



UNIT(S) B1.05, B1.15 & B1.25

GROUND LEVEL, LEVELS 1 & 2

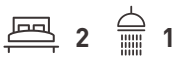
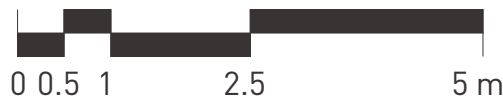
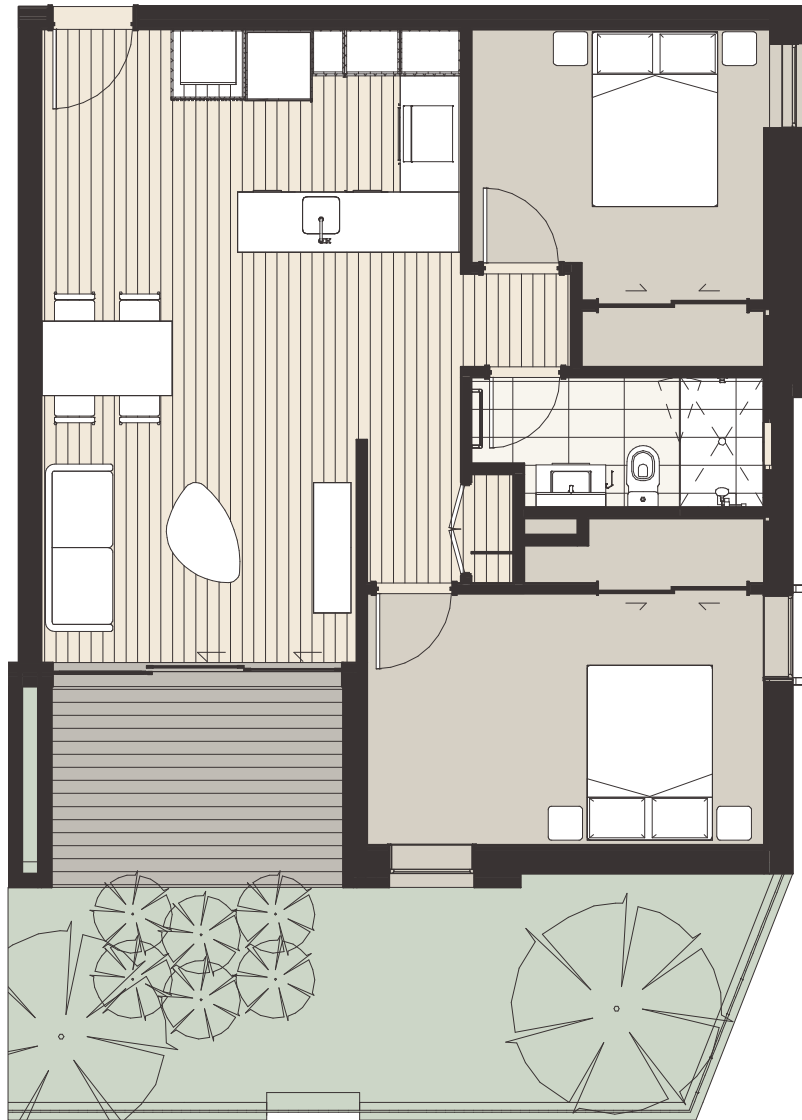
INTERIOR 64m² **DECK** 8m² **GARDEN (GROUND LEVEL ONLY)** 20m² **TOTAL FLOOR AREA** 72m²



Floorplans are indicative only and not drawn to scale. These materials were prepared prior to obtaining all necessary consents and the commencement of construction. Every precaution has been taken to establish the accuracy at the time of printing however no responsibility will be taken for any errors or omissions. All plans, images and artist impressions of exterior and interiors are intended as a guide only. The developer reserves the right to make changes to the development and the units (including the final fittings, finishes, dimensions and specifications of the development and the units) without notice. Furnishings and finishes are only included if and to the extent provided in the Agreement for Sale and Purchase. Interested parties are directed to rely on their own enquiries and the terms set out in the Agreement for Sale and Purchase.



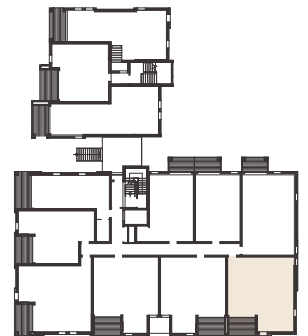
ELEMENT



UNIT(S) B1.06, B1.16 & B1.26

GROUND LEVEL, LEVELS 1 & 2

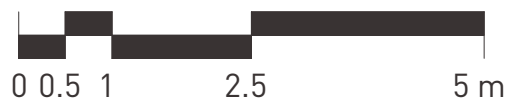
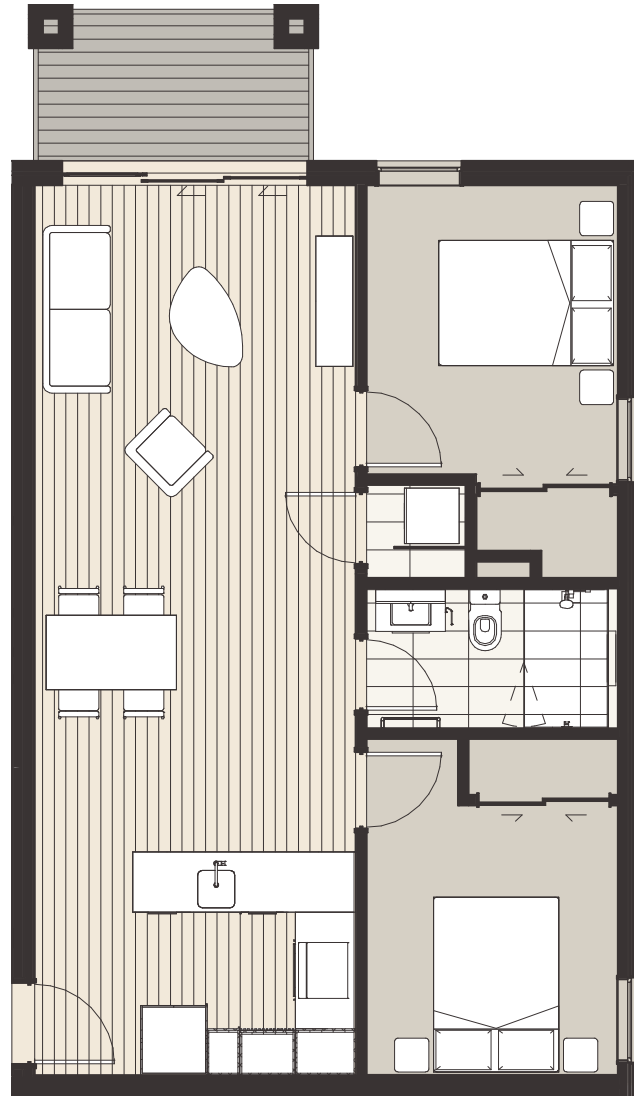
INTERIOR 69m² **DECK** 8m² **GARDEN (GROUND LEVEL ONLY)** 20m² **TOTAL FLOOR AREA** 77m²



Floorplans are indicative only and not drawn to scale. These materials were prepared prior to obtaining all necessary consents and the commencement of construction. Every precaution has been taken to establish the accuracy at the time of printing however no responsibility will be taken for any errors or omissions. All plans, images and artist impressions of exterior and interiors are intended as a guide only. The developer reserves the right to make changes to the development and the units (including the final fittings, finishes, dimensions and specifications of the development and the units) without notice. Furnishings and finishes are only included if and to the extent provided in the Agreement for Sale and Purchase. Interested parties are directed to rely on their own enquiries and the terms set out in the Agreement for Sale and Purchase.

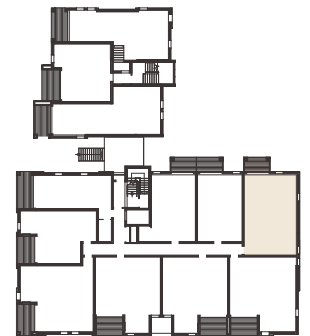


ELEMENT



UNIT(S) B1.07, B1.17 & B1.27 | GROUND LEVEL, LEVELS 1 & 2

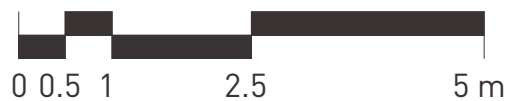
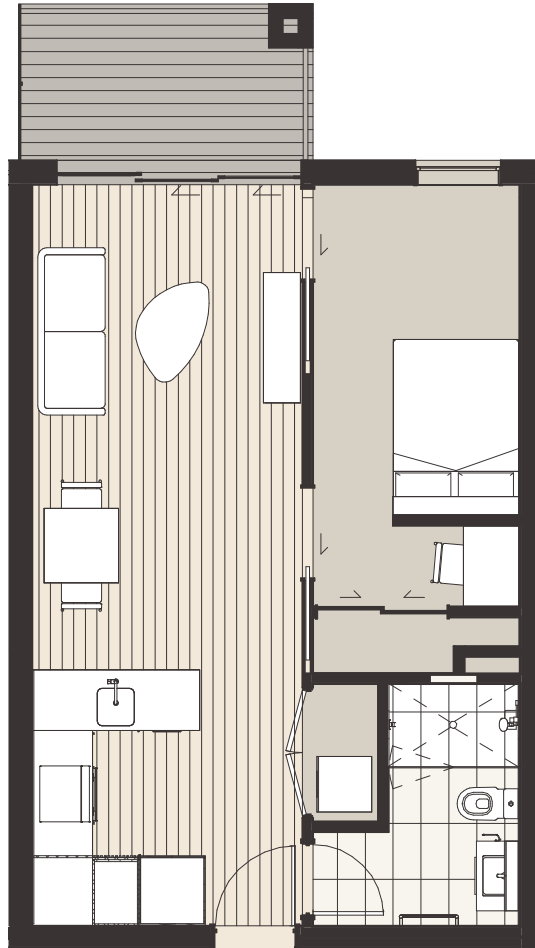
INTERIOR 66m² DECK 5m² TOTAL FLOOR AREA 71m²



Floorplans are indicative only and not drawn to scale. These materials were prepared prior to obtaining all necessary consents and the commencement of construction. Every precaution has been taken to establish the accuracy at the time of printing however no responsibility will be taken for any errors or omissions. All plans, images and artist impressions of exterior and interiors are intended as a guide only. The developer reserves the right to make changes to the development and the units (including the final fittings, finishes, dimensions and specifications of the development and the units) without notice. Furnishings and finishes are only included if and to the extent provided in the Agreement for Sale and Purchase. Interested parties are directed to rely on their own enquiries and the terms set out in the Agreement for Sale and Purchase.



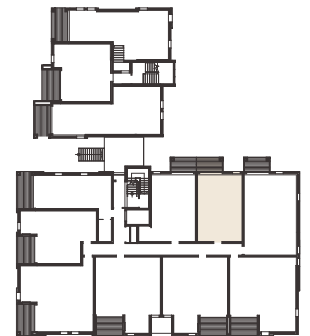
ELEMENT



UNIT(S) B1.08, B1.18 & B1.28

GROUND LEVEL, LEVELS 1 & 2

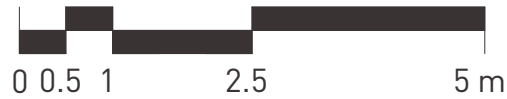
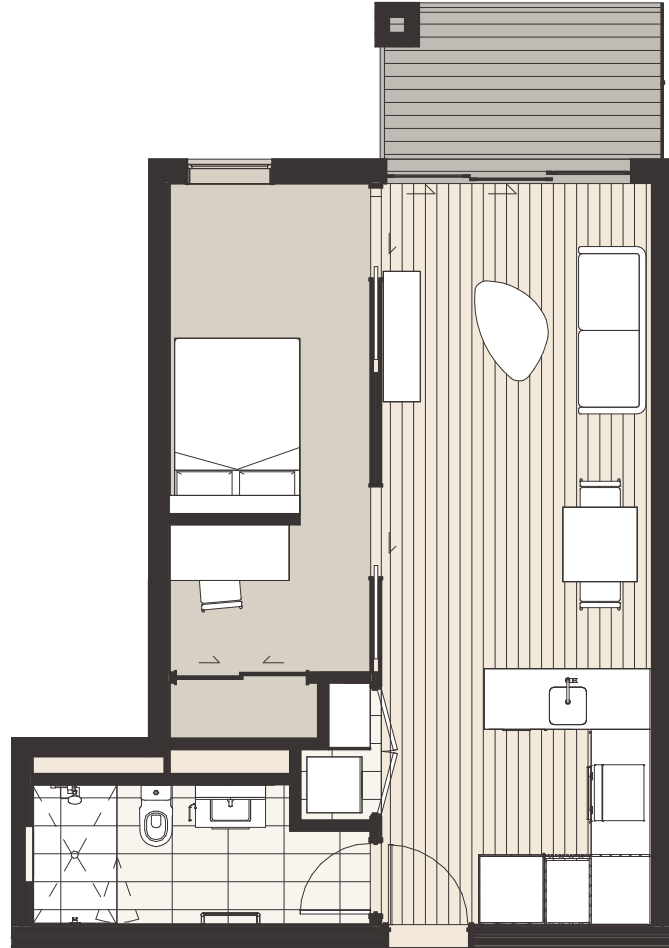
INTERIOR 46m² DECK 5m² TOTAL FLOOR AREA 51m²



Floorplans are indicative only and not drawn to scale. These materials were prepared prior to obtaining all necessary consents and the commencement of construction. Every precaution has been taken to establish the accuracy at the time of printing however no responsibility will be taken for any errors or omissions. All plans, images and artist impressions of exterior and interiors are intended as a guide only. The developer reserves the right to make changes to the development and the units (including the final fittings, finishes, dimensions and specifications of the development and the units) without notice. Furnishings and finishes are only included if and to the extent provided in the Agreement for Sale and Purchase. Interested parties are directed to rely on their own enquiries and the terms set out in the Agreement for Sale and Purchase.



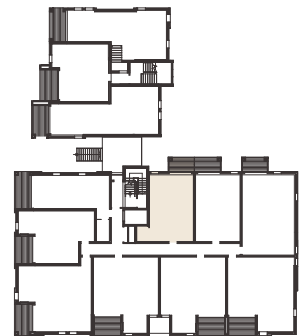
ELEMENT



UNIT(S) B1.09, B1.19 & B1.29

GROUND LEVEL, LEVELS 1 & 2

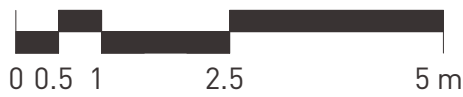
INTERIOR 49m² DECK 5m² TOTAL FLOOR AREA 54m²



Floorplans are indicative only and not drawn to scale. These materials were prepared prior to obtaining all necessary consents and the commencement of construction. Every precaution has been taken to establish the accuracy at the time of printing however no responsibility will be taken for any errors or omissions. All plans, images and artist impressions of exterior and interiors are intended as a guide only. The developer reserves the right to make changes to the development and the units (including the final fittings, finishes, dimensions and specifications of the development and the units) without notice. Furnishings and finishes are only included if and to the extent provided in the Agreement for Sale and Purchase. Interested parties are directed to rely on their own enquiries and the terms set out in the Agreement for Sale and Purchase.



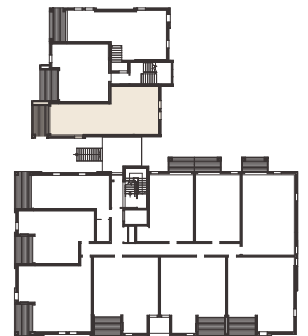
ELEMENT



UNIT(S) B2.01, B2.11 & B2.21

GROUND LEVEL, LEVELS 1 & 2

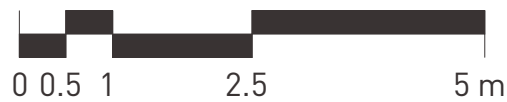
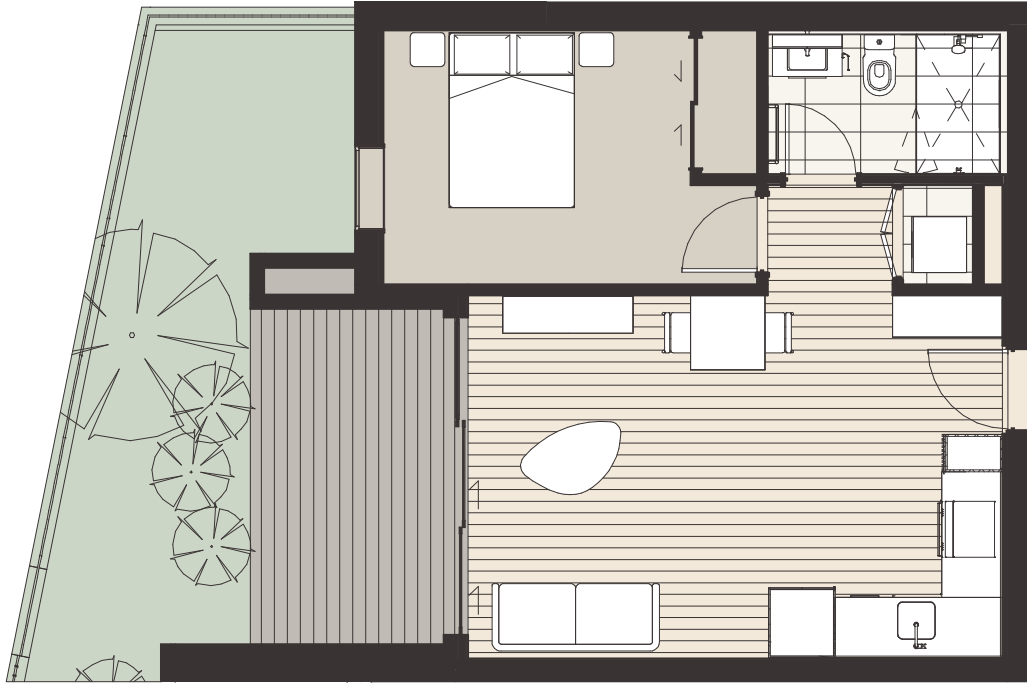
INTERIOR 66m² **DECK** 9m² **GARDEN (GROUND LEVEL ONLY)** 9m² **TOTAL FLOOR AREA** 75m²



Floorplans are indicative only and not drawn to scale. These materials were prepared prior to obtaining all necessary consents and the commencement of construction. Every precaution has been taken to establish the accuracy at the time of printing however no responsibility will be taken for any errors or omissions. All plans, images and artist impressions of exterior and interiors are intended as a guide only. The developer reserves the right to make changes to the development and the units (including the final fittings, finishes, dimensions and specifications of the development and the units) without notice. Furnishings and finishes are only included if and to the extent provided in the Agreement for Sale and Purchase. Interested parties are directed to rely on their own enquiries and the terms set out in the Agreement for Sale and Purchase.

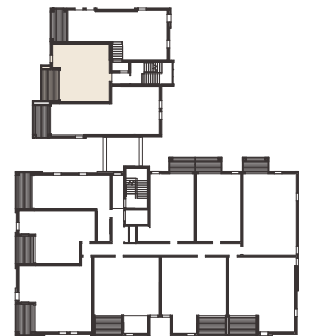


ELEMENT



UNIT(S) B2.02 & B2.12 | GROUND LEVEL & LEVEL 1

INTERIOR 47m² **DECK** 9m² **GARDEN (GROUND LEVEL ONLY)** 16m² **TOTAL FLOOR AREA** 56m²



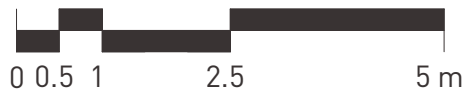
Floorplans are indicative only and not drawn to scale. These materials were prepared prior to obtaining all necessary consents and the commencement of construction. Every precaution has been taken to establish the accuracy at the time of printing however no responsibility will be taken for any errors or omissions. All plans, images and artist impressions of exterior and interiors are intended as a guide only. The developer reserves the right to make changes to the development and the units (including the final fittings, finishes, dimensions and specifications of the development and the units) without notice. Furnishings and finishes are only included if and to the extent provided in the Agreement for Sale and Purchase. Interested parties are directed to rely on their own enquiries and the terms set out in the Agreement for Sale and Purchase.



TYPE

L

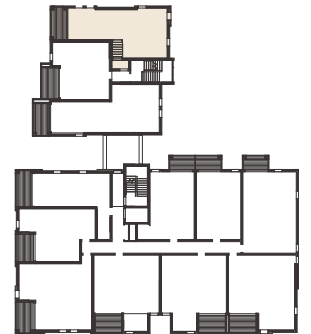
ELEMENT



UNIT(S) B2.03 & B2.13

GROUND LEVEL & LEVEL 1

INTERIOR 67m² **DECK** 8m² **GARDEN (GROUND LEVEL ONLY)** 7m² **TOTAL FLOOR AREA** 75m²

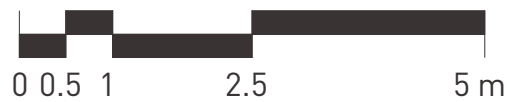


Floorplans are indicative only and not drawn to scale. These materials were prepared prior to obtaining all necessary consents and the commencement of construction. Every precaution has been taken to establish the accuracy at the time of printing however no responsibility will be taken for any errors or omissions. All plans, images and artist impressions of exterior and interiors are intended as a guide only. The developer reserves the right to make changes to the development and the units (including the final fittings, finishes, dimensions and specifications of the development and the units) without notice. Furnishings and finishes are only included if and to the extent provided in the Agreement for Sale and Purchase. Interested parties are directed to rely on their own enquiries and the terms set out in the Agreement for Sale and Purchase.



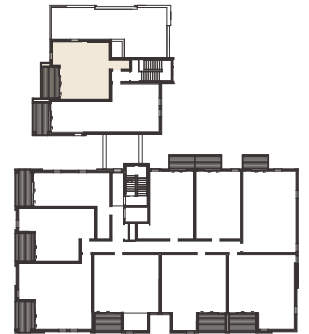
TYPE
M

ELEMENT



UNIT(S) B2.22 | LEVEL 2

INTERIOR 51m² DECK 9m² TOTAL FLOOR AREA 60m²



Floorplans are indicative only and not drawn to scale. These materials were prepared prior to obtaining all necessary consents and the commencement of construction. Every precaution has been taken to establish the accuracy at the time of printing however no responsibility will be taken for any errors or omissions. All plans, images and artist impressions of exterior and interiors are intended as a guide only. The developer reserves the right to make changes to the development and the units (including the final fittings, finishes, dimensions and specifications of the development and the units) without notice. Furnishings and finishes are only included if and to the extent provided in the Agreement for Sale and Purchase. Interested parties are directed to rely on their own enquiries and the terms set out in the Agreement for Sale and Purchase.